



ISO/TC 211 WG meetings
and 34th Plenary
Toulouse, 4-8 June 2012

afnor
NORMALISATION

Toulouse, la ville rose

A southern city with Spanish accents and Italian facades

- On the banks of the Garonne River, half-way between the Atlantic Ocean and the Mediterranean Sea, Toulouse has always been open to outside influences and cultures.
- Though it carefully cultivates its Occitan identity, its reputation for cultural treasures, art of living and technological prowess goes far beyond the seas and oceans.
- Toulouse is a happy combination of a city that is pleasant to live in and a metropolitan area that looks to the future.





Toulouse in short



- **France's 4th largest city: 445,000 inhabitants (917,000 in the urban area)**
- **France's 3rd university city : 110,000 students**
- **Capital of France's biggest region: Midi-Pyrénées**
- **Geographical situation**
 - ◆ Surface area 11,800 hectares
 - ◆ Latitude 43° 36' North; Longitude 01° 26' East
 - ◆ 681 km south of Paris
 - ◆ 150 km from the Mediterranean sea
 - ◆ 250 km from the Atlantic ocean
 - ◆ 110 km from the Pyrenean ski stations
- **Weather**
 - ◆ In June: temperatures between 15 and 25 Celsius degrees
 - ◆ Usually sunny

Access : Arriving by air



- **Toulouse-Blagnac international airport is 8 km west of Toulouse.**

www.toulouse.aeroport.fr

- ◆ Direct international flights from/to Algeria, Belgium, Germany, Italy, Morocco, Netherlands, Portugal, Spain, Switzerland, Tunisia, Turkey, UK/Wales
- ◆ Regular flights from/to Paris airports

- **From the airport**

- ◆ Airport shuttle Flybus service
 - Departures every 20 minutes between the airport and Toulouse
 - Stops at Compans Caffarelli metro station
 - Price: 5 €
 - <http://www.tisseo.fr/sites/default/files/NavetteAeroport.html>

- ◆ Taxis

Taxis are parked outside the arrivals hall on the ground floor of the airport.
Journey time: approximately 20 minutes, depending on traffic.
A single number for all companies: +33 (0)5 61 30 02 54

Access : Arriving by rail and car



● Arriving by rail

- ◆ Matabiau SNCF railway station is in the city centre, with connection to the metro
- ◆ High speed trains from/to : Paris (6h), Lille (8h), Lyon (5h), Marseille (4h)
- ◆ Local trains from/to South-Western cities

● Arriving by car

- ◆ Toulouse has direct motorway connections to the main capitals of Northern and Southern Europe
 - A61 (Carcassonne, Montpellier, Barcelona)
 - A62 (Montauban, Agen, Bordeaux, Limoges, Paris)
 - A64 (Foix, Lourdes, Bayonne, San Sebastian)
 - A68 (Lavaur, Albi)
 - A66 (Pamiers, Foix, Andorra)
- ◆ Where can I park in Toulouse? Cf. www.vincipark.com

Getting around

By metro

- ◆ Line A: Basso Cambo - Balma Gramont
 - South-West to North-East
- ◆ Line B: Borderouge – Ramonville
 - North to South

Fares

- ◆ One-way: 1,60 €
- ◆ Return: 2,80 €



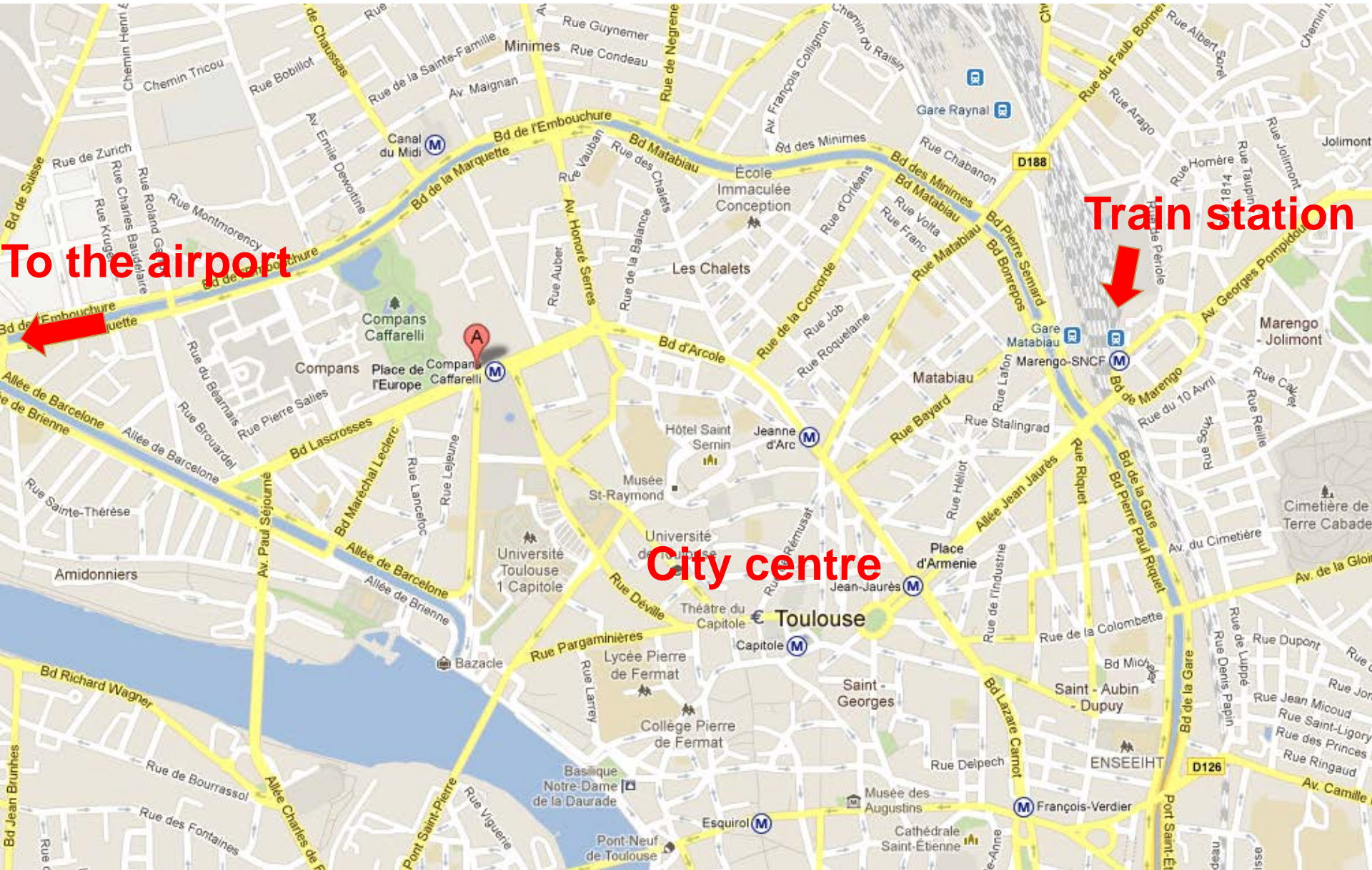
Meeting venue & accommodation

MERCURE ATRIA TOULOUSE COMPANS CAFFARELLI

- 3-star hotel close to the city centre
- 10 minutes' walk from the Capitole and museums
- Metro station : Compans Caffarelli
- Next to Compans Caffarelli Park with reknown Japanese Garden



MERCURE ATRIA TOULOUSE COMPANS CAFFARELLI ***



To the airport

Train station

City centre



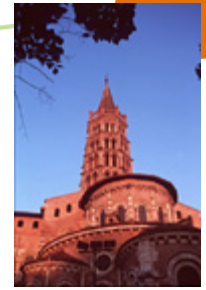
Toulouse Violet flower
Symbol of the "ville rose"



Canal du Midi



Saint Pierre's bridge and Dôme des Graves



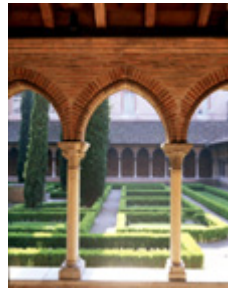
Saint-Sernin basilica



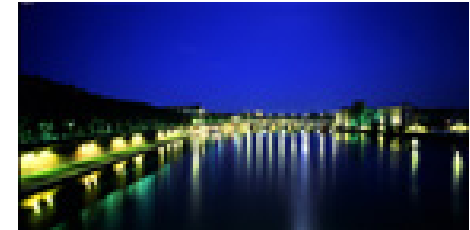
The City of space



Capitole's place



Grand Rond garden



Quai de la Daurade



Rugby



Wine



Dish of beans, sausages and assorted meat (cassoulet)



<http://panomir.com/toulouse.html>

THE WALLED TOWN OF CARCASSONNE





CARCASSONNE



North-eastern section of the Roman wall. Remains of the Late Empire wall set off from the curtain wall built at the end of the XIIIth Century between the Moulin Tower (in the background) and the Trésau Tower



The Moulin, Connétable, Vieulas and Marquière Towers on the North facade.



<http://www.monuments-nationaux.fr/en/>

Welcome in « Pays Cathare »



Pays Cathare, meaning "Cathar Country", is used to highlight the Cathar heritage and history of the region where Catharism was traditionally strongest.

This area is centered around fortresses such as Montségur (1h from Toulouse) and Carcassonne. These areas have ruins from the wars against the Cathars which are still visible today.



CASTRES

70 km from Toulouse



Castres, birthplace of Jean Jaurès, located at the doors of the Regional Natural Park of Haut Languedoc is a historic city, dating back to the XVI century.





ALBI

75 km from Toulouse



Albi, an important town in Tarn. Tourist town in south western France, near Carcassonne and Toulouse, Albi is proudly installed along the banks of the Tarn.





CORDES SUR CIEL, 81 km from Toulouse

On his rock.

Through its exceptional site and its remarkable architectural heritage, Cordes-sur-Ciel is one of the most significant medieval France and one of the top European Heritage.





**I hope you will enjoy
your stay in Toulouse!**